



AQA B3.2 Transport systems in plants and animals LEVEL 3

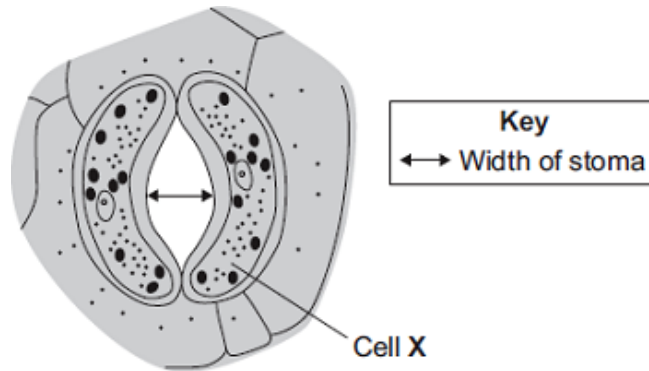


5 minutes



5 marks

- Q1.** Plant leaves have many stomata.
The diagram shows a stoma.



- (a) Name cell **X**

(1)

- (b) The table shows the mean widths of the stomata at different times of the day for two different species of plant.
Species **A** grows in hot, dry deserts.
Species **B** grows in the UK.

	Time of day in hours	Mean width of stomata as a percentage of their maximum width	
		Species A	Species B
Dark	0	95	5
	2	86	5
	4	52	6
Light	6	6	40
	8	4	92
	10	2	98
	12	1	100
	14	0	100
	16	1	96
	18	5	54
Dark	20	86	6
	22	93	5
	24	95	5

The data in the table show that species **A** is better adapted than species **B** to living in hot, dry deserts.

Explain how.

.....

.....

.....

.....

.....

.....

.....

.....

(4)
(Total 5 marks)

